

Customized Orthodontic Frankel Dental Device for Misaligned teeth

Basic Information

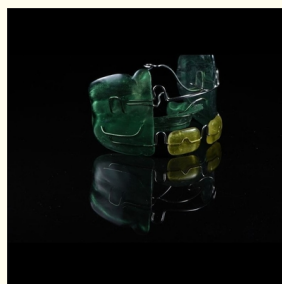


Product Specification

- Turnaround Time: 3 Days In Lab
- Warranty: 5 Years
- Shipping Way: UPS (preferred), Fedex And DHL Linex. Armex Are Also Available
- Payment: T/T, HSBC, PayPal, MoneyGram, Western Union
- Highlight: Customized frankel dental device,
Orthodontic frankel dental device,
Misaligned Teeth frankel orthodontic device



More Images



Our Product Introduction

for more products please visit us on adschinadentallab.com

Product Description

Description

Frankel Dental Devices: The Ultimate Solution for Healthy Teeth

As a manufacturer in China, we pride ourselves on producing high-quality products that cater to the needs of our customers. One such product is the Frankel Dental Device, which is designed to improve the overall health of teeth. The Frankel Dental Device is the ultimate solution for maintaining healthy and beautiful teeth.

We understand that many people suffer from various dental problems such as malocclusion, overbite, underbite, and teeth gaps. These conditions not only affect one's dental health but can also lead to issues with self-esteem and confidence. Frankel Dental Devices are specifically designed to address and improve these dental problems.

Our devices are made from the highest quality materials and undergo rigorous testing to ensure that they meet our standards of excellence. They offer a range of benefits to both patients and dentists alike. These benefits include:

1. Improved Dental Health: Frankel Dental Devices are designed to improve dental health by applying the right pressure to the teeth. Our devices help in correcting misalignment, making teeth straighter and better aligned.
2. Enhanced Speech: Misaligned teeth can affect speech capabilities. Using the Frankel Dental Device can help improve speech issues by ensuring proper teeth alignment.
3. Boosts Confidence: A beautiful smile is one's biggest asset. When you use our device to correct misaligned teeth or other dental issues, you can be confident about your appearance.
4. Comfortable and Effective: Our devices are made from soft materials that fit the contours of the teeth, which makes wearing them comfortable for extended periods of time. The Frankel Dental Device is also effective in achieving the desired results within a short amount of time.
5. Easily Accessible: The Frankel Dental Device is readily available and can be shipped worldwide. Our pricing is competitive, making it an affordable solution to various dental problems.

Our devices are applicable to people of all ages, from children as young as six years old to adults. We understand that dental problems can arise at any time in life, and the Frankel Dental Device can help address them with ease and effectiveness.

In conclusion, Frankel Dental Devices offer a fast, effective, and comfortable solution to a range of dental problems. Whether you're a dentist looking for proven tools to improve your patients' dental health or an individual looking to improve your dental health, Frankel Dental Devices are the perfect answer. Order your Frankel Dental Device today and experience the difference in your dental health!

Production Introduction:

The Frankel Appliance is an orthopedic appliance made with acrylic and wire. It is a removable orthodontic appliance used in the growing individual to effect the development of muscle, bone, and dentition simultaneously. This appliance provides and promotes the interruption of abnormal function and facilitates the establishment of harmonious functional patterns. It also provides an environment in which inhibiting factors are removed and which dental harmony can be achieved.

Product Parameter

Customized

Product Feature and Application

This appliance is most often prescribed for patients with more pronounced Class II jaw discrepancies (upper-jaw forward and lower-jaw backward), Class III jaw discrepancies (upper-jaw backward and lower-jaw forward) or Open Bite problems (front jaws/teeth are apart and do not meet). Each appliance is fabricated as a custom fit with buccal shields (side acrylic pieces) and other components to modify growth in all planes of space. These types of appliances work comfortably with a patient's inherent growth to affect the desired changes in skeletal/dental development.

The three most commonly used designs are the Frankel II, Frankel III and Frankel IV.

Deliver, Shipping and Serving

We accept STL files.

We accept normal impressions, you can send us by Fedex, UPS, DHL or Linex

We finish the jobs in 4-5 days once we receive your cases

We accept TT, Paypal



Why choose us?

Our products are rigorously tested to ensure quality and safety before they reach our customers.

Through unremitting efforts and continuous innovation, our company has been highly recognized by the country and the industry, and has obtained a number of honorary qualifications.

Our products are suitable for a wide range of dental conditions and treatments.

We care about our employees and provide them with opportunities to develop and improve themselves so as to achieve the common development of employees and the company.

We take pride in our ability to provide high-quality products at affordable prices.

Our company actively advocates the concept of 'reputation first, quality first', with high-quality Frankel Dental Devices, first-class service, moderate price advantage, fully win the love of the market and customers.

Our factory is run with the highest ethical standards and operates in full compliance with all applicable laws and regulations.

We continue to surpass ourselves through the unity and cooperation of all systems.

At our factory, we take pride in our attention to detail and commitment to quality.

We provide perfect pre-sales and after-sales services to create unlimited value and advantages for our customers, and we are your trusted business partner.

Hot Tags: frankel dental devices, China frankel dental devices manufacturers, suppliers, factory, Orthodontic Expanders, hawley retainer bottom, precision attachment partials, palate expander and braces at same time, precision attachment in fixed partial denture, bottom mouth expander



+8613430498390

info@chinaadsdentallab.com

adschinadentallab.com

Building 4, Hengguangyao Industrial Park, Yonghe Road, Fuyong, Shenzhen, China 518103